

Abaxis Driver CD Help

Abaxis Driver CD Help

Abaxis Driver CD Help

Table of Contents

1.	Download Abaxis Driver CD	1
2.	Introduction	2
3.	Linux	3-5
4.	Mac OS X 10.3	6-9
5.	Mac OS X 10.4, 10.5 and 10.6	10-13
6.	Windows 2000	14-17
7.	Windows Me and 98	18-22
8.	Windows XP, Vista, 7, Server 2003 and Server 2008	23-26

1 Download Abaxis Driver CD

Abaxis Driver CD Download Instructions

The Abaxis Driver CD can be downloaded as a zip file from the Abaxis web site. The Abaxis Driver CD contains USB to Serial drivers for your Piccolo Xpress or VetScan VS2 analyzer. The drivers install your Piccolo Xpress or VetScan VS2 analyzer as a virtual communications port on your Windows, Mac or Linux computer.

Follow the instructions below to download the Abaxis Driver CD.

Download Instructions

1. **Navigate** to the web site: **<http://updates.abaxis.com>** (**<http://updates.abaxis.com/>**) > **Abaxis Driver CD**.
2. **Complete** all fields requested in the registration form > **Submit**.
3. **Open** the confirmation e-mail sent to the e-mail address you provided in step two (2). If you do not receive the confirmation e-mail check your **Junk** folder.
4. **Navigate** to the download site using the download link in the confirmation e-mail.
5. **Select** the link **Download Abaxis Driver CD**.
6. **Save** the file **Abaxis Driver CD.zip** to the desktop.
7. **Select** your operating system for step-by-step installation instructions.
 - Linux (Section 3)**
 - Mac OS X 10.3 (Section 4)**
 - Mac OS X 10.4, 10.5 and 10.6 (Section 5)**
 - Windows 2000 (Section 6)**
 - Windows Me and 98 (Section 7)**
 - Windows XP, Vista, 7, Server 2003 and Server 2008 (Section 8)**

2 Introduction

Introduction

The Abaxis Driver CD contains USB to Serial drivers for your Piccolo Xpress or VetScan VS2 analyzer. The drivers install your Piccolo Xpress or VetScan VS2 analyzer as a virtual communications port on your Windows, Mac or Linux computer. The Abaxis Driver CD can be downloaded from the Abaxis web site, see **Download Abaxis Driver CD (Section 1)** for download instructions. The Abaxis Driver CD can also be requested from Abaxis Technical Support 1-800-822-2947.

If you already have the Abaxis Driver CD select your operating system for step-by-step installation instructions.

Linux (Section 3)

Mac OS X 10.3 (Section 4)

Mac OS X 10.4, 10.5 and 10.6 (Section 5)

Windows 2000 (Section 6)

Windows Me and 98 (Section 7)

Windows XP, Vista, 7, Server 2003 and Server 2008 (Section 8)

3 Linux

Linux Driver Installation

This document describes how to enable communication between a Piccolo Xpress or VetScan VS2 analyzer and Linux. In this document you will install a driver that makes a Piccolo Xpress or VetScan VS2 analyzer available as a virtual communications port in Linux.

Installation requires the following:

- § Piccolo Xpress or VetScan VS2 Blood Chemistry Analyzer
- § PC with Linux (kernel version 2.4.20 and above)
- § PC with an available USB port
- § USB cable with Type A and Type B adapters (small and big ends).
- § Abaxis Driver CD or the file "Abaxis Driver CD.zip" (download from the Abaxis web site).

Note 1: The driver is already included in the Linux OS (kernel version 2.4.20 and above). The driver is also available on the Abaxis Driver CD in the Linux folder.

Note 2: Driver installation in Linux requires root account privileges.

Note 3: The screen shots in these instructions are from a typical Ubuntu Linux installation. Some of the dialog boxes shown may vary slightly in other versions of Linux.

Note 4: USB Cables are available from Abaxis Technical Support 1-800-822-2947.

Driver Installation

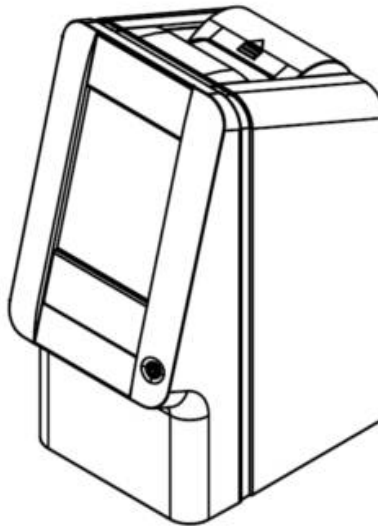
1. **Turn ON** the PC.
2. **Connect** the large end of the USB cable (Type A connector) to the Linux computer.



3. **Connect** the small end of the USB cable (Type B connector) to the Analyzer.



4. **Turn ON** the analyzer.



5. **Open** a Terminal window in Linux
6. **Login** as **root**.
7. **Navigate** to the directory `/etc/udev/rules.d`.
8. **Create** and **open** a file named `99-usbftdi.rules`.

```
abaxis@abaxis-desktop:~$ sudo -s
[sudo] password for abaxis:
root@abaxis-desktop:~# cd /etc/udev/rules.d
root@abaxis-desktop:/etc/udev/rules.d# pico 99-usbftdi.rules
```

9. **Type** the following text into the file.

```
# For Abaxis Blood Chemistry Analyzer with Vendor
ID = 0x0403, Product ID = 0xcd18

SYSFS{idProduct}=="cd18", SYSFS{idVendor}
=="0403", RUN+="/sbin/modprobe -q ftdi_sio
product=0xcd18 vendor=0x0403"
```

10. **Save** and **close** the file.

11. **Restart** the computer.

12. **Confirm** the USB Port is recognized as a Serial Port on the computer.

Terminal > **Type** `dmesg | grep FTDI` > **Enter**.

Identify the analyzer as **FTDI USB Serial Device converter** > **Record** the Communications Port where the Analyzer is installed (e.g. `ttyUSB0`).

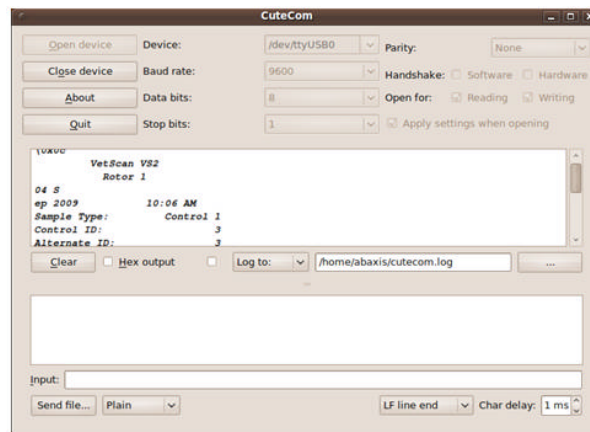
```
root@abaxis-desktop: /etc/udev/rules.d
File Edit View Terminal Help
GNU nano 2.0.9 File: 99-usbftdi.rules
# For Abaxis Blood Chemistry Analyzer with Vendor ID = 0x0403, Product ID = 0xcd18
SYSFS{idProduct}=="cd18", SYSFS{idVendor}=="0403", RUN+="/sbin/modprobe -q ftdi_sio
```

```
root@abaxis-desktop:~# dmesg | grep FTDI
[ 891.040319] USB Serial support registered for FTDI USB Serial Device
[ 891.040378] ftdi_sio 2-1:1.0: FTDI USB Serial Device converter detected
[ 891.044743] usb 2-1: FTDI USB Serial Device converter now attached to ttyUSB0
[ 891.044781] ftdi_sio: v1.5.0:USB FTDI Serial Converters Driver
root@abaxis-desktop:~#
```

13. **Configure** any PC applications (e.g. minicom or CuteCom) to communicate with the analyzer over the virtual communication port recorded in Step 12.

CuteCom is configured with the parameters: Device **ttyUSB0** (port recorded in step 12), Baud rate: **9600**, Data bits: **8**, Stop bits: **1**, Parity: **None**.

Note: You may need to uninstall the "brltty" port before the USB to Serial driver will work in Ubuntu Linux. **Terminal** > **Type** sudo apt-get remove brltty > **Enter**.



4 Mac OS X 10.3

Mac OS X 10.3 Driver Installation

This document describes how to enable communication between a Piccolo Xpress or VetScan VS2 analyzer and Mac OS X 10.3. In this document you will install a driver that makes a Piccolo Xpress or VetScan VS2 analyzer available as a virtual communications port in Mac OS X.

Installation requires the following:

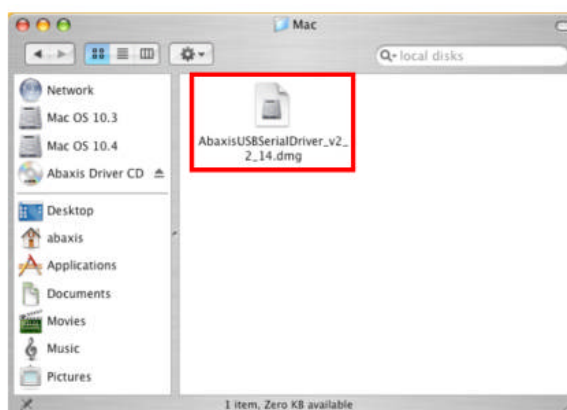
- \$ Piccolo Xpress or VetScan VS2 Blood Chemistry Analyzer.
- \$ Mac with OS X 10.3.
- \$ Mac with an available USB port.
- \$ USB cable with Type A and Type B adapters (small and big ends).
- \$ Abaxis Driver CD or the file "Abaxis Driver CD.zip" (download from the Abaxis web site).

Note 1: Driver installation in Mac requires administrative account privileges.

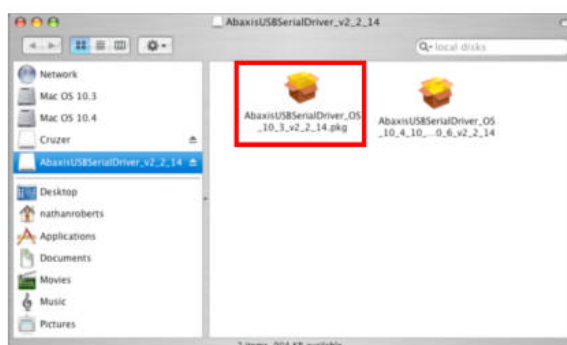
Note 2: USB Cables are available from Abaxis Technical Support 1-800-822-2947.

Driver Installation

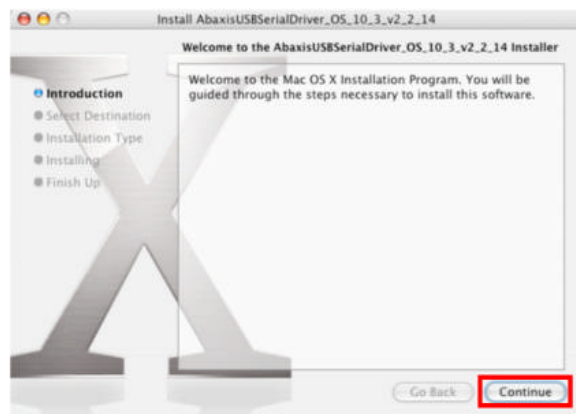
1. **Ensure** the Analyzer is not connected to the Mac with a USB Cable.
2. **Turn on** the Mac
3. If you have the Abaxis Driver CD: **Insert** the Abaxis Driver CD into the Mac's CD-ROM drive.
4. If you downloaded the file "Abaxis Driver CD.zip": **Open** the file "Abaxis Driver CD.zip".
5. If you have the Abaxis Driver CD: **Browse** to the CD drive.
6. If you downloaded the file "Abaxis Driver CD.zip": **Browse** to the folder "Abaxis Driver CD."
7. **Navigate** to the **Mac** folder.
8. **Open** AbaxisUSBSerialDriver_v2_2_14.dmg.



9. **Open** AbaxisUSBSerialDriver_OS_10_3_v2_2_14.pkg in AbaxisUSBSerialDriver_v2_2_14.

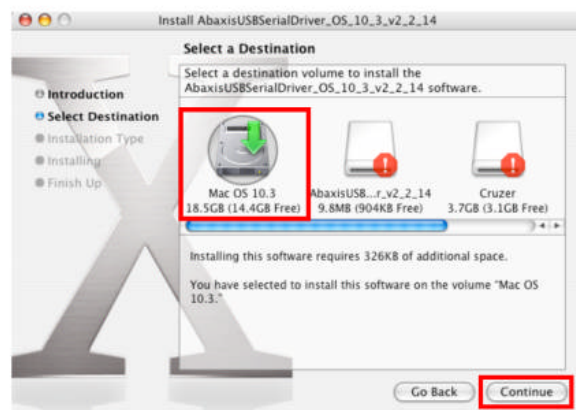


10. **Continue**



11. **Select** a destination for the installation.

12. **Continue**.



13. **Install or Upgrade**.



14. **Enter** the administrator username and password.

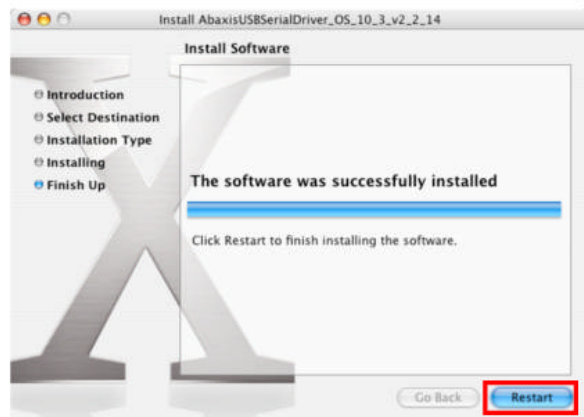
15. **OK**.



16. **Continue Installation.**



17. **Restart.**



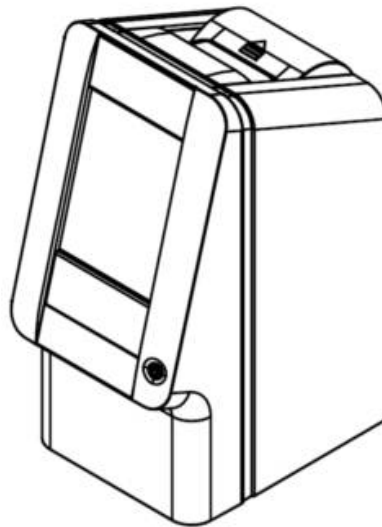
18. **Connect** the large end of the USB cable (Type A connector) to the Mac.



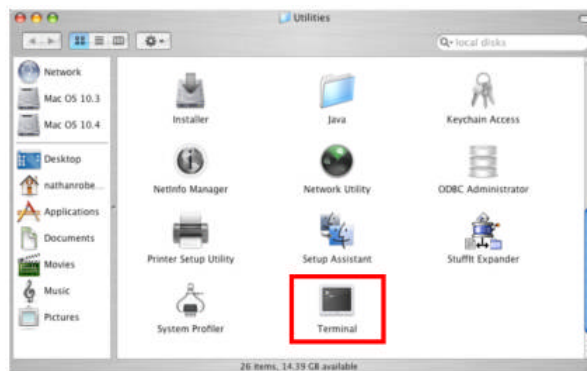
19. **Connect** the small end of the USB cable (Type B connector) to the Analyzer.



20. **Turn on** the Piccolo Xpress or VetScan VS2 analyzer.

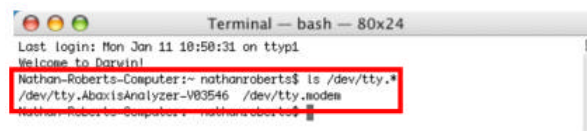


21. Go > **Utilities > Terminal**.



22. **Type** `ls /dev/tty.*`

23. The Piccolo Xpress or VetScan VS2 analyzer is listed as **`/dev/tty.AbaxisAnalyzer-(analyzer serial number)`**.



24. Mac applications can now be configured to communicate with the analyzer over the virtual communication port.

5 Mac OS X 10.4, 10.5 and 10.6

Mac OS X 10.4, 10.5 and 10.6 Driver Installation

This document describes how to enable communication between a Piccolo Xpress or VetScan VS2 analyzer and Mac OS X 10.4, 10.5 and 10.6. In this document you will install a driver that makes a Piccolo Xpress or VetScan VS2 analyzer available as a virtual communications port in Mac OS X.

Installation requires the following:

- \$ Piccolo Xpress or VetScan VS2 Blood Chemistry Analyzer.
- \$ Mac with OS X 10.4, 10.5 or 10.6.
- \$ Mac with an available USB port.
- \$ USB cable with Type A and Type B adapters (small and big ends).
- \$ Abaxis Driver CD or the file "Abaxis Driver CD.zip" (download from the Abaxis web site).

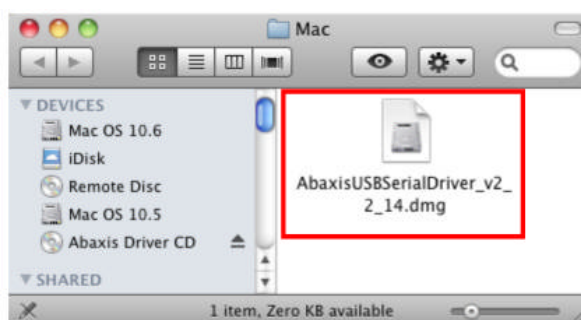
Note 1: The screen shots in these instructions are from a typical Mac OS X 10.6 installation. Some of the dialog boxes shown may vary slightly in other versions of Mac OS X.

Note 2: Driver installation in Mac requires administrative account privileges.

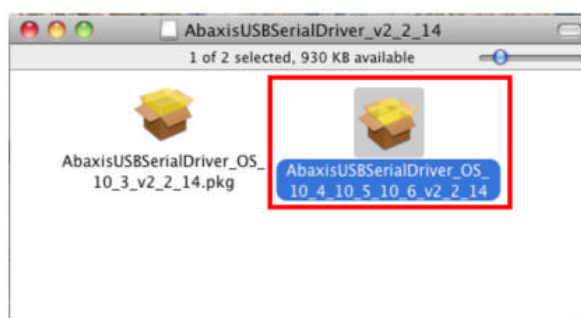
Note 3: USB Cables are available from Abaxis Technical Support 1-800-822-2947.

Driver Installation

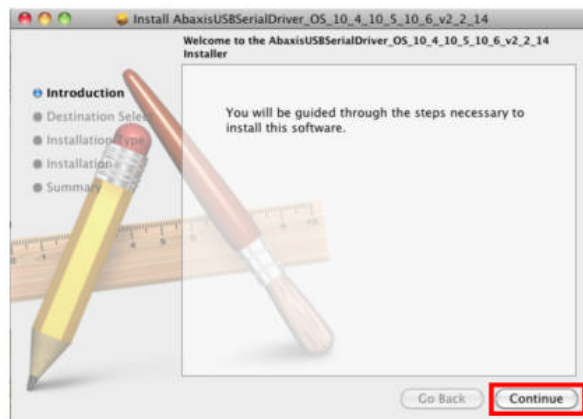
1. **Ensure** the Analyzer is not connected to the Mac with a USB Cable.
2. **Turn on** the Mac
3. If you have the Abaxis Driver CD: **Insert** the Abaxis Driver CD into the Mac's CD-ROM drive.
4. If you downloaded the file "Abaxis Driver CD.zip": **Open** the file "Abaxis Driver CD.zip".
5. If you have the Abaxis Driver CD: **Browse** to the CD drive.
6. If you downloaded the file "Abaxis Driver CD.zip": **Browse** to the folder "Abaxis Driver CD."
7. **Navigate** to the **Mac** folder.
8. **Open** AbaxisUSBSerialDriver_v2_2_14.dmg.



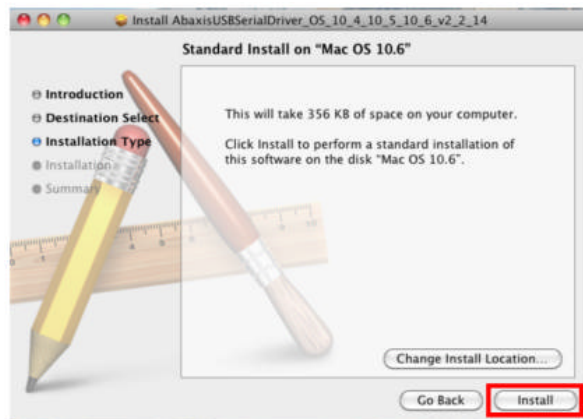
9. **Open** AbaxisUSBSerialDriver_OS_10_4_10_5_10_6v2_2_14.pkg in AbaxisUSBSerialDriver_v2_2_14.



10. Click **Continue**.

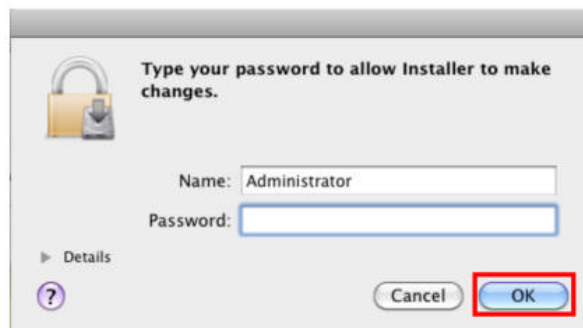


11. Click **Install or Upgrade**.

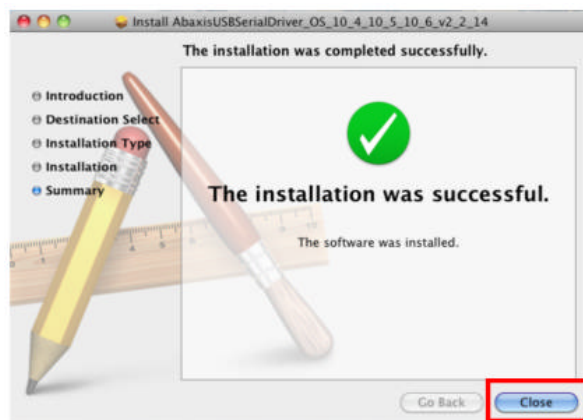


12. **Enter** the administrator username and password.

13. **OK**.



14. **Close**



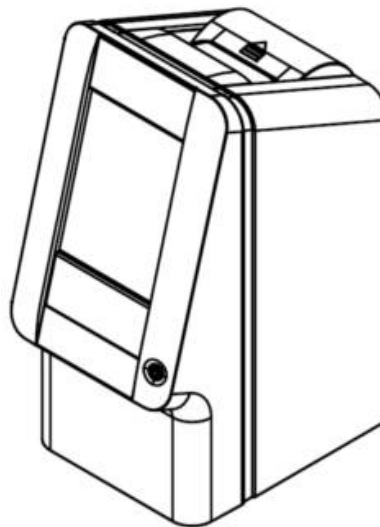
15. **Connect** the large end of the USB cable (Type A connector) to the Mac.



16. **Connect** the small end of the USB cable (Type B connector) to the Analyzer.



17. **Turn on** the Piccolo Xpress or VetScan VS2 analyzer.



18. Go > Utilities > Terminal.



19. Type `ls /dev/tty.*`

20. The Piccolo Xpress or VetScan VS2 analyzer is listed as `/dev/tty.AbaxisAnalyzer-`(last 6 digits of the analyzer serial number).



21. Mac applications can now be configured to communicate with the analyzer over the virtual communication port.

6 Windows 2000

Windows 2000 Driver Installation

This document describes how to enable communication between a Piccolo Xpress or VetScan VS2 analyzer and Windows 2000. In this document you will install a driver that makes a Piccolo Xpress or VetScan VS2 analyzer available as a virtual communications port in Windows.

Installation requires the following:

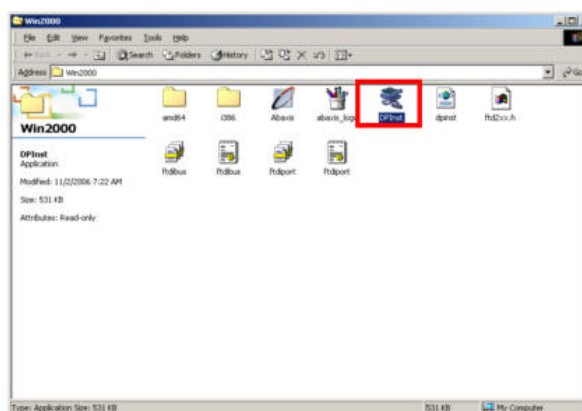
- § Piccolo Xpress or VetScan VS2 Blood Chemistry Analyzer.
- § PC with Windows 2000.
- § PC with an available USB port.
- § USB cable with Type A and Type B adapters (small and big ends).
- § Abaxis Driver CD or the file "Abaxis Driver CD.zip" (download from the Abaxis web site).
- § If you downloaded "Abaxis Driver CD.zip" a Zip file utility. (e.g. WinZip).

Note 1: Driver installation in Windows requires a user account with administrative privileges.

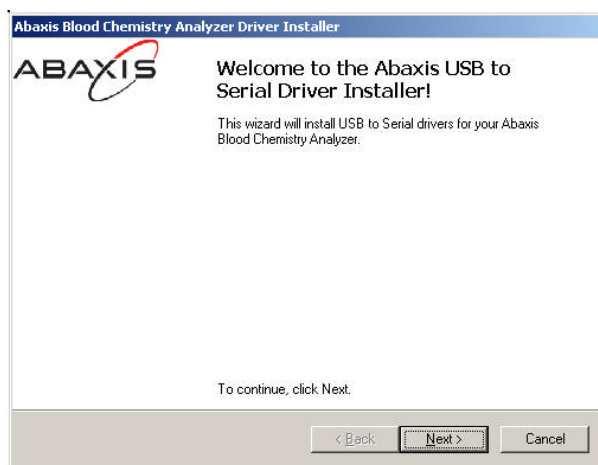
Note 2: USB Cables are available from Abaxis Technical Support 1-800-822-2947.

Driver Installation

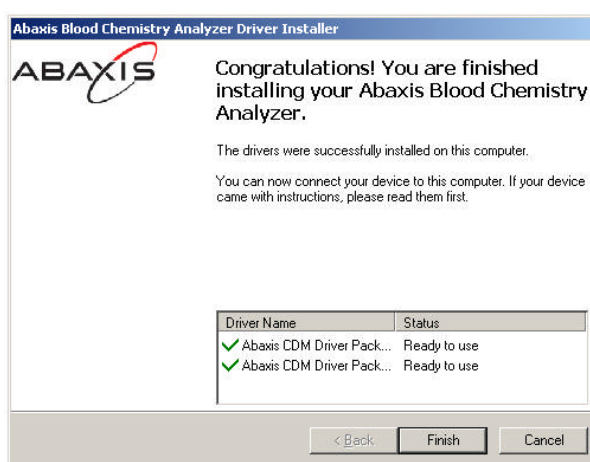
1. **Ensure** the Analyzer is not connected to the PC with a USB Cable.
2. **Turn on** the PC.
3. If you have the Abaxis Driver CD: **Insert** the Abaxis Driver CD into the PC's CD-ROM drive.
4. If you downloaded the file "Abaxis Driver CD.zip": **Unzip** the file "Abaxis Driver CD.zip" to the desktop.
5. If you have the Abaxis Driver CD: Windows Explorer (Windows Key + e) > **Right click** the CD drive > **Open**.
6. If you downloaded the file "Abaxis Driver CD.zip": **Navigate** to the Abaxis Driver CD folder.
7. **Navigate** to the **Win2000** folder.
8. Double click **DpInst.exe**.



8. **Next** to install the Abaxis Drivers.



9. **Finish** to complete the driver installation.



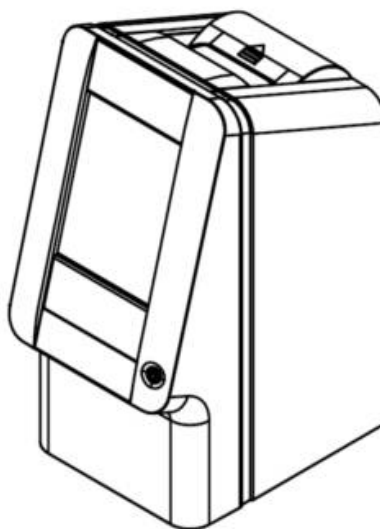
10. **Connect** the large end of the USB cable (Type A connector) to the PC.



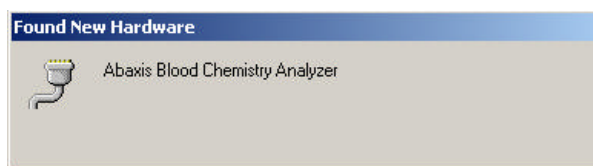
11. **Connect** the small end of the USB cable (Type B connector) to the Analyzer.



12. **Turn on** the analyzer.

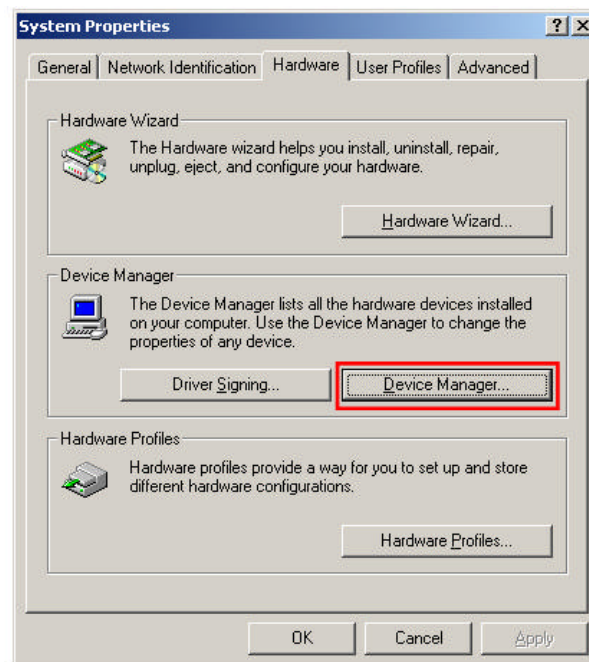


13. **Wait** for the PC to recognize the analyzer. (This may take a few minutes)

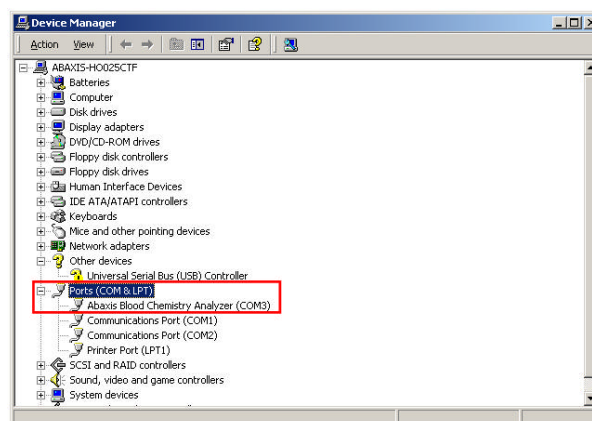


14. **Start > Settings > Control Panel > System**
> Hardware tab.

15. **Device Manager**



16. **Expand Ports (COM & LPT) > Identify** the Abaxis Blood Chemistry Analyzer.



7 Windows Me and 98

Windows 98 and ME Driver Installation

This document describes how to enable communication between a Piccolo Xpress or VetScan VS2 analyzer and Windows 98 and ME PC. In this document you will install a driver that makes a Piccolo Xpress or VetScan VS2 analyzer available as a virtual communications port in Windows.

Installation requires the following:

- § Piccolo Xpress or VetScan VS2 Blood Chemistry Analyzer.
- § PC with Windows 98 or ME.
- § USB cable with Type A and Type B adapters (small and big ends).
- § If you downloaded "Abaxis Driver CD.zip" a Zip file utility. (e.g. WinZip).
- § Abaxis Driver CD or the file "Abaxis Driver CD.zip" (download from the Abaxis web site).

Note 1: Driver installation in Windows requires a user account with administrative privileges.

Note 2: The screen shots in these instructions are from a typical Windows 98 installation. Some of the dialog boxes shown may vary slightly in other versions of Windows.

Note 3: USB Cables are available from Abaxis Technical Support 1-800-822-2947.

Driver Installation

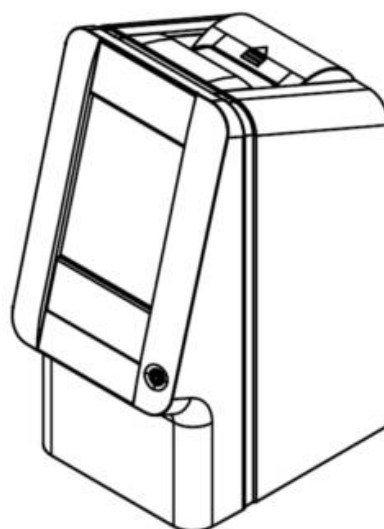
1. **Turn ON** the PC.
2. If you have the Abaxis Driver CD: **Insert** the Abaxis Driver CD into the PC's CD-ROM drive.
3. If you downloaded the file "Abaxis Driver CD.zip":
Unzip the file "Abaxis Driver CD.zip" to the desktop.
4. **Connect** the large end of the USB cable (Type A connector) to the PC.



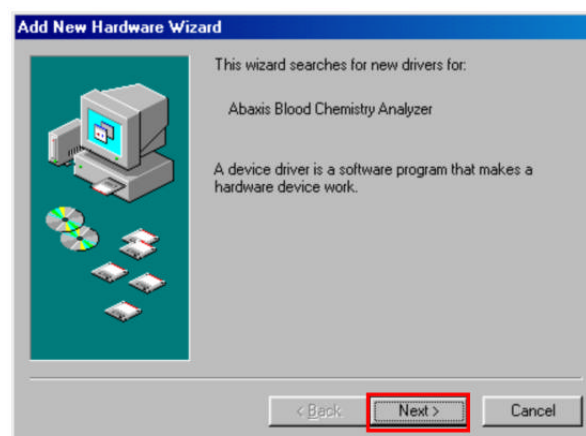
5. **Connect** the small end of the USB cable (Type B connector) to the Analyzer.



6. **Turn ON** the analyzer > **Wait** for the PC to recognize the analyzer. The Found New Hardware Wizard will automatically start - this may take a few minutes.



7. **Next** to start the driver installation.



8. **Search for the best driver for your device (Recommended)** > **Next** to identify the drivers that will be installed.



9. **Check** Specify a location.

10. If you have the Abaxis Driver CD: **Navigate** to the CD drive.

11. If you downloaded the file "Abaxis Driver CD.zip": **Navigate** to the Abaxis Driver CD folder.

12. **Select** Win98_ME folder

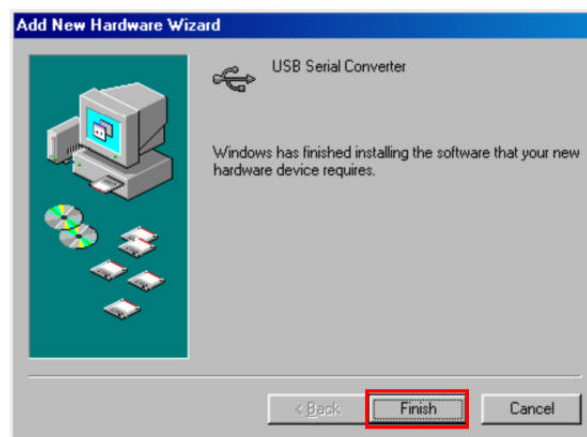
13. **Next** to install the drivers located in the Win98_ME folder.



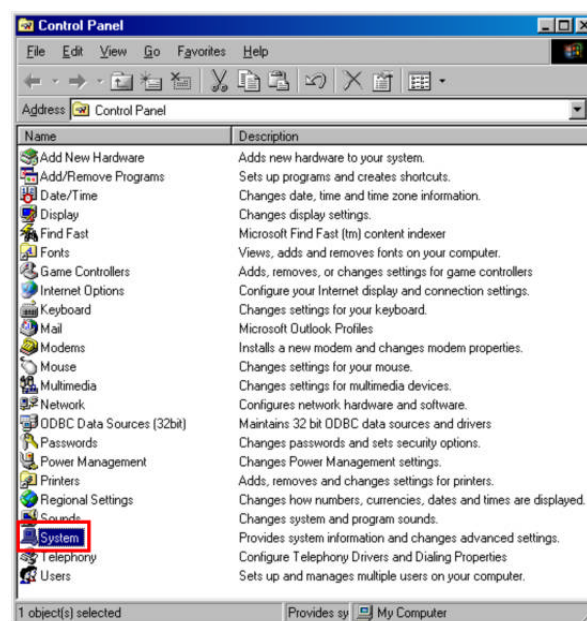
14. **Next** to install the Abaxis Drivers.



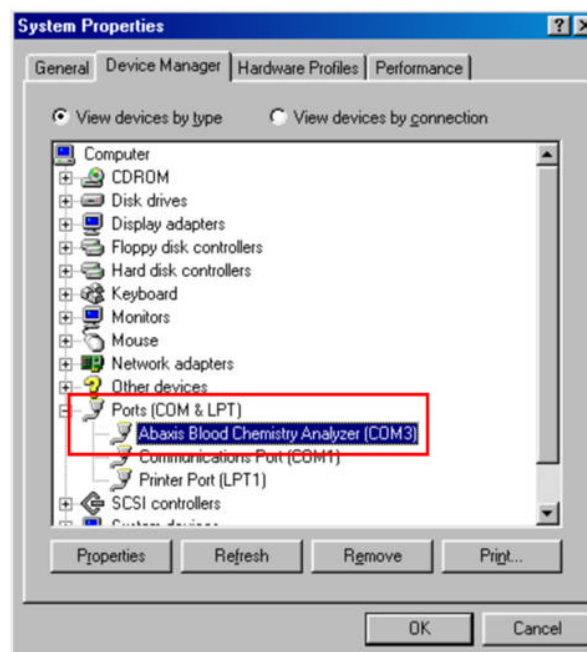
15. **Finish** to complete the driver installation.



16. Windows > **Start** > **Settings** > **Control Panel** > Double click **System**.



17. **Device Manager** tab > **Ports (COM & LPT)** > **Identify** the Abaxis Blood Chemistry Analyzer. Note the port to which the analyzer was assigned.



8 Windows XP, Vista, 7, Server 2003 and Server 2008

Windows XP, Vista, 7, Server 2003 and Server 2008 Driver Installation

This document describes how to enable communication between a Piccolo Xpress or VetScan VS2 analyzer and Windows XP, Vista, 7, Server 2003, Server 2008 and Server 2008 R2. In this document you will install a driver that makes a Piccolo Xpress or VetScan VS2 analyzer available as a virtual communications port in Windows.

Installation requires the following:

§ Piccolo Xpress or VetScan VS2 Blood Chemistry Analyzer.

§ PC with Windows XP (x86 and x64), Windows Vista (x86 and x64), Windows 7 (x86 and x64), Windows 2000, Windows Server 2003 (x86 and x64), Windows Server 2008 (x86 and x64) or Windows Server 2008 R2 (x64).

§ PC with an available USB port.

§ USB cable with Type A and Type B adapters (small and big ends).

§ Abaxis Driver CD or the file "Abaxis Driver CD.zip" (download from the Abaxis web site).

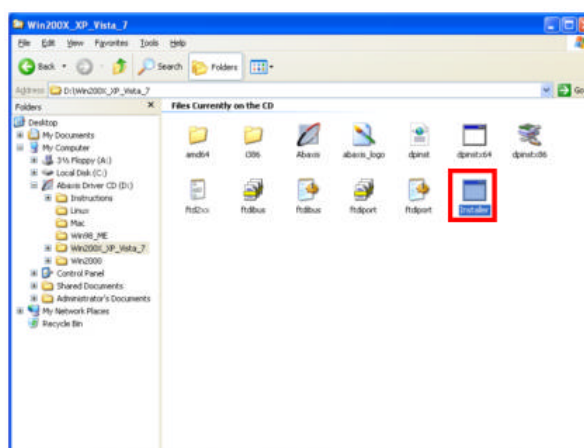
Note 1: Driver installation in Windows requires a user account with administrative privileges.

Note 2: The screen shots in these instructions are from a typical Windows XP Professional installation. Some of the dialog boxes shown may vary slightly in other versions of Windows.

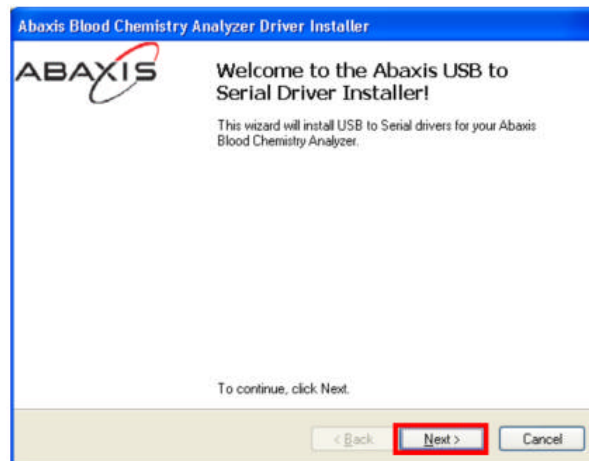
Note 3: USB Cables are available from Abaxis Technical Support 1-800-822-2947.

Driver Installation

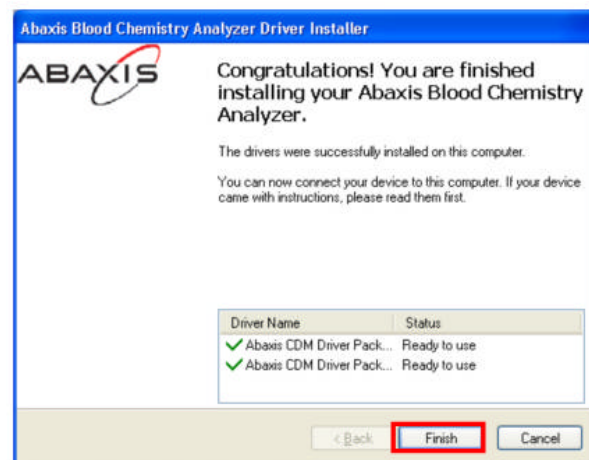
1. **Ensure** the Analyzer is not connected to the PC with a USB Cable.
2. **Turn on** the PC.
3. If you have the Abaxis Driver CD: **Insert** the Abaxis Driver CD into the PC's CD-ROM drive.
4. If you downloaded the file "Abaxis Driver CD.zip": **Unzip** the file "Abaxis Driver CD.zip" to the desktop.
5. If you have the Abaxis Driver CD: Windows Explorer (Windows Key + e) > **Right click** the CD drive > **Open**.
6. If you downloaded the file "Abaxis Driver CD.zip": **Navigate** to the Abaxis Driver CD folder.
7. **Navigate** to the **Win200X_XP_Vista_7** folder.
8. Windows XP and Server 2003 users: Double click **Installer.exe**.
9. Windows Vista, 7 and Server 2008 users: Right click **Installer.exe** > **Run as Administrator** > **Continue**.



10. **Next** to install the Abaxis Drivers.



11. **Finish** to complete the driver installation.



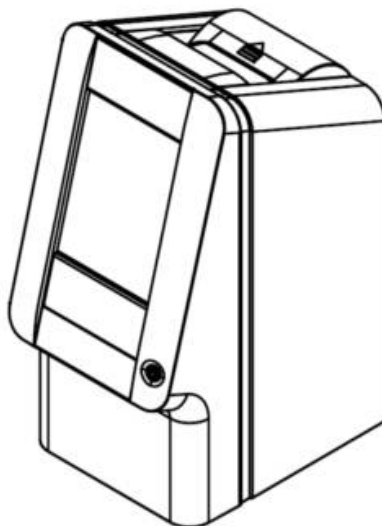
12. **Connect** the large end of the USB cable (Type A connector) to the PC.



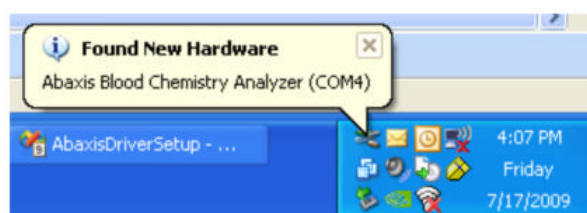
13. **Connect** the small end of the USB cable (Type B connector) to the Analyzer.



14. **Turn on** the analyzer.



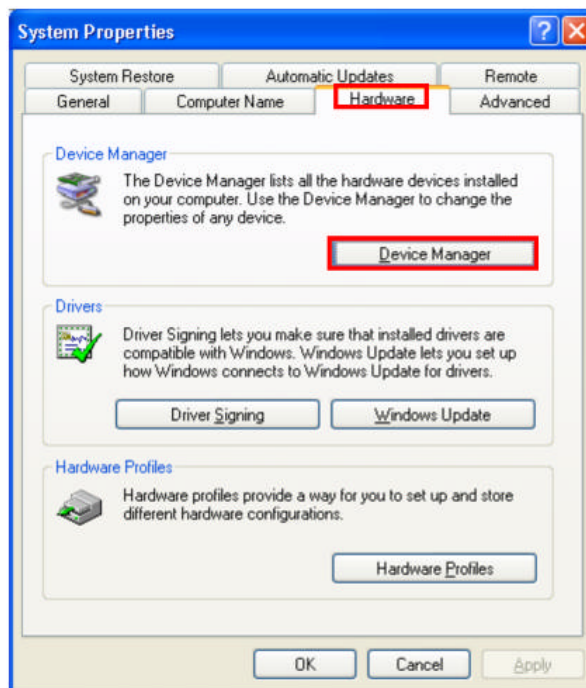
15. **Wait** for the PC to recognize the analyzer. (This may take a few minutes)



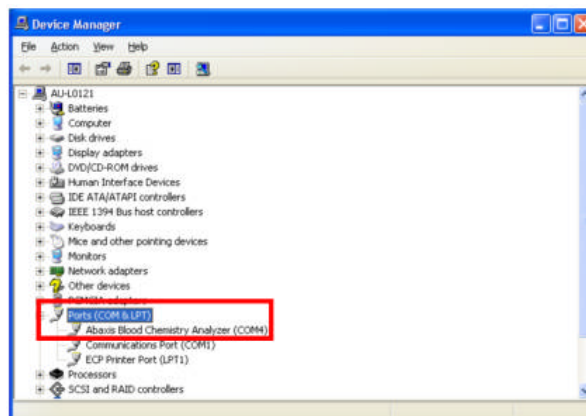
16. Windows XP and Server 2003 users: **Start > Control Panel > System > Hardware tab > Device Manager.**

17. Windows Vista users: **Windows Logo > Control Panel > Hardware and Sound > Device Manager > Continue.**

18. Windows 7, and Server 2008 users: **Windows Logo > Control Panel > System and Security > Device Manager.**



19. **Expand Ports (COM & LPT) > Identify the Abaxis Blood Chemistry Analyzer.**



Index

Download Abaxis Driver CD, 1

Introduction, 2

Linux, 3-5

Mac OS X 10.3, 6-9

Mac OS X 10.4, 10.5 and 10.6, 10-13

Windows 2000, 14-17

Windows Me and 98, 18-22

Windows XP, Vista, 7, Server 2003 and Server 2008, 23-26